

21 June 2007  
AUSTRALIAN STOCK EXCHANGE LIMITED  
COMPANY ANNOUNCEMENTS PLATFORM



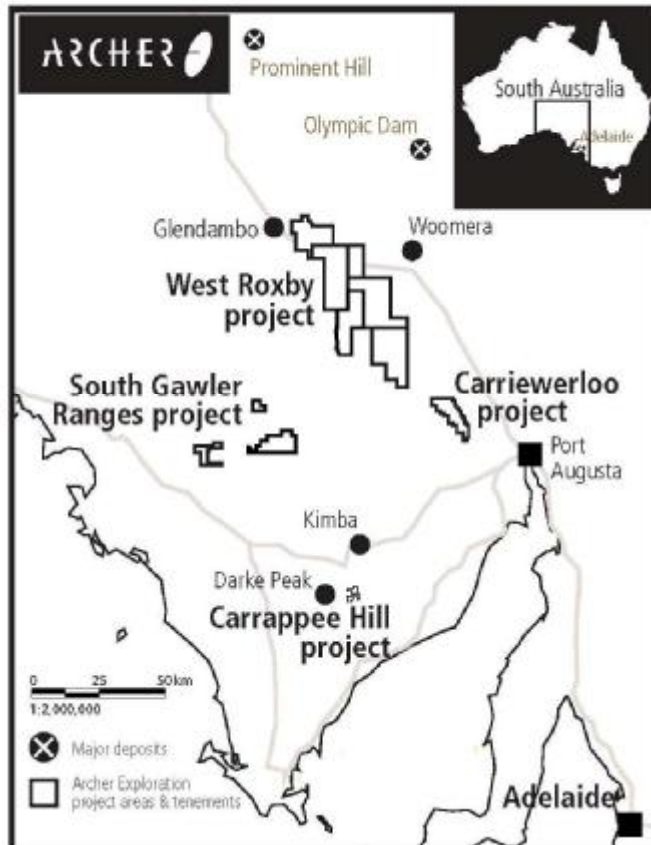
ASX CODE USA

### ADDENDUM - PRIORITY OFFER IN RELATION TO ARCHER EXPLORATION LIMITED

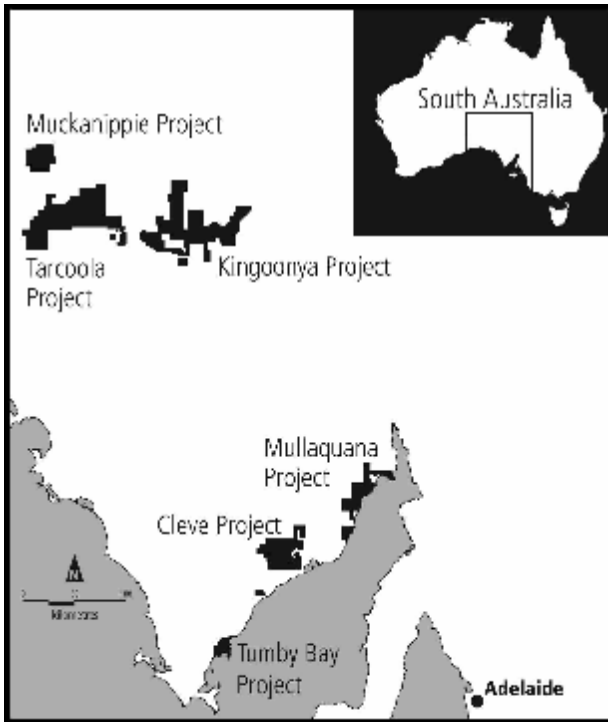
On 20<sup>th</sup> June 2007 UraniumSA Ltd (USA) advised the market that it had entered into a services agreement (Services Agreement) with Archer Exploration Limited (**Archer Exploration**), an unlisted public company proposing to undertake a public offer of shares and list on the ASX in August 2007. As consideration for entering into the Services Agreement, USA has been issued 1,000,000 shares in the capital of Archer Exploration (in addition to the 1,000,000 shares previously issued by Archer Exploration to USA) and Archer Exploration has agreed to allow USA shareholders recorded on the USA share register at 29 June 2007 a priority application in respect of a total of 5,000,000 shares in its initial public offering

Archer Exploration has interests in 8 mineral exploration tenements in the Gawler Craton in South Australia. A map showing the location of these tenements is given below. USA is advised that Archer Exploration proposes to target uranium and copper exploration, with a focus on its gravity anomaly at Evelyn Dam, 74 kilometres south-southwest of Woomera in South Australia.

### Archer Exploration projects



About UraniumSA Ltd



*UraniumSA is an Adelaide-based uranium-only explorer specialising in palaeochannel or rollfront and unconformity styles of uranium mineralisation within a substantial portfolio of properties in South Australia's Gawler Craton. The focus of the rollfront uranium search is within its substantial tenement holding over the highly regarded Kingoonya Palaeodrainage System which hosts the Warrior and Ealbara uranium prospects in adjoining tenements. On the eastern seaboard of Eyre Peninsula, UraniumSA's acreage features altered and potentially uranium mineralised unconformities of the style which host the majority of current world uranium production.*

*The Company's growth strategy is founded on a well established collaborative business model and a balanced vision for the development of its exploration assets. The Company is pioneering long-term technical and educational relationships with key potential stake holders and project partners in China and elsewhere and is well placed to generate, in time, significant value to our shareholders.*

Russel Bluck  
Managing Director  
UraniumSA Limited