

Friday, 15 April 2011

AUSTRALIAN SECURITIES EXCHANGE
COMPANY ANNOUNCEMENTS PLATFORM
ASX CODE USA

Phone +61 (0)8 8132 0577
Fax +61 (0)8 8132 0766
executive@uraniumsa.com.au
www.uraniumsa.com.au

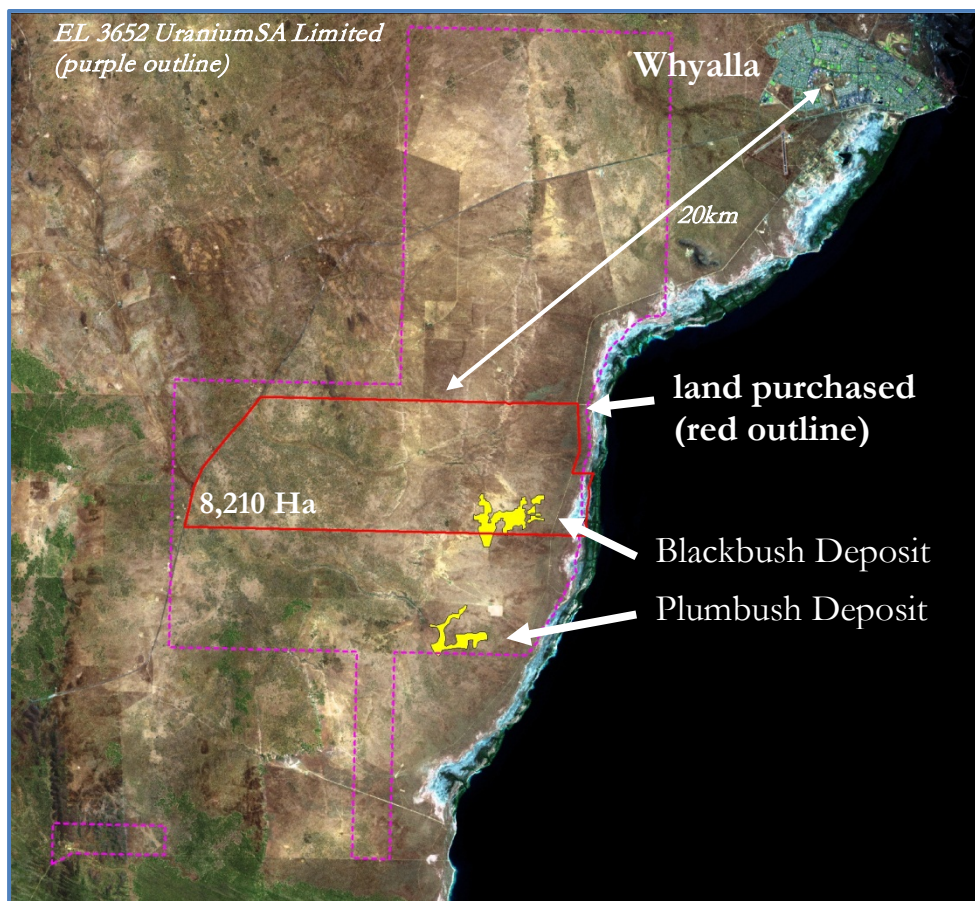
BLACKBUSH LAND PURCHASE

Mullaquana Uranium Project Eyre Peninsula, South Australia

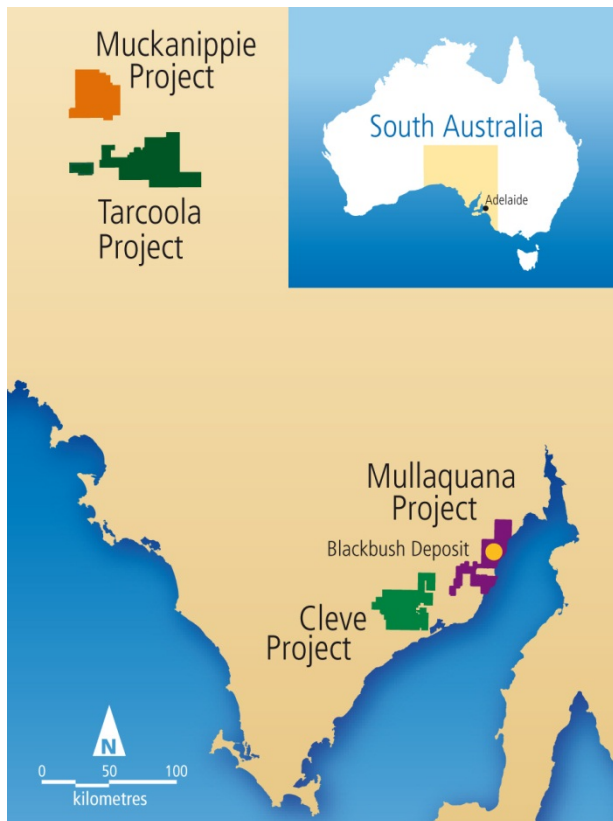
UraniumSA Limited has signed a contract to purchase the land which covers the majority of the Blackbush Deposit Inferred Resource from the owners of Nonowie Station. A total area of 8,210 hectares has been purchased in 4 separate Crown Lease Perpetual titles. The southern extensions of Blackbush and the Plumbush Deposit are located on the adjoining Mullaquana Station.

Ownership of the property will enable the Company to maintain the pace of its development of the Blackbush Deposit and will facilitate the completion of documentation that is required for the regulatory approvals which have to be obtained as the project progresses through field trials and towards production.

The land is located approximately 20km south west of the city of Whyalla (below). From its northeast corner the land is connected to Whyalla by 18km of unsealed public road. The western boundary of the land extends along the Lincoln Highway with the northern corner 29km from Whyalla.



About UraniumSA Limited



UraniumSA is an Adelaide based uranium only explorer specialising in sediment hosted styles of uranium mineralisation within a substantial portfolio of properties in South Australia's Gawler Craton.

The Company has discovered sediment hosted uranium mineralisation within its Mullaquana Project, 20km south of the industrial city of Whyalla on the eastern Eyre Peninsula.

The inventory of uranium mineralisation in the Mullaquana Project within the Blackbush and Plumbush Deposits is some 19,000 tonnes of U_3O_8 (equivalent to approximately 42 million pounds).

The Blackbush Deposit is being advanced towards the commencement of a field trial for an in-situ recovery operation with a production objective of late 2012 to early 2013.

Continued drilling of the Plumbush Deposit will grow the resource base and the updated estimates will be released during 2011.

Through its own tenure and by Joint Venture the Company has exploration control over what it considers the most prospective portions of the Pirie Basin.

Russel Bluck
Managing Director
UraniumSA Limited

The exploration results mineral resources reported herein, insofar as they relate to mineralisation, are based on information compiled by Mr Russel Bluck an employee of UraniumSA Limited and Member of the Australian Institute of Geoscientists with sufficient experience relevant to the style of mineralisation and type of deposits being considered, and to the activity which is reported to qualify as a Competent Person as defined by the Australasian Code for Reporting of Exploration Results, Mineral Resources and Ore Reserves (the JORC Code, 2004 Edition). Mr. Bluck consents to the inclusion in the report of matters based on his information in the form and context in which it appears. It should be noted that the abovementioned exploration results are preliminary.